



Mathile Family Foundation 2010 Annual Report



**“Consult not your fears but your hopes and your dreams.”  
– Pope John XXIII**

**Dear Friends,**

It has been another year of far-reaching challenges. From tragic natural disasters to the continued pressures of a tough economy, our world seems to grow increasingly fractured. But with God’s blessing, the human spirit continues to rise. And we are encouraged that, in coming together, we can still achieve great things – that out of many pieces, a beautiful mosaic can emerge – one that reflects our hopes and dreams.

In the quest for a better tomorrow, we all have a part to play. That’s why our Foundation’s mission remains steadfast: to support children in need by creating opportunities for those who have already exhibited the motivation to succeed.

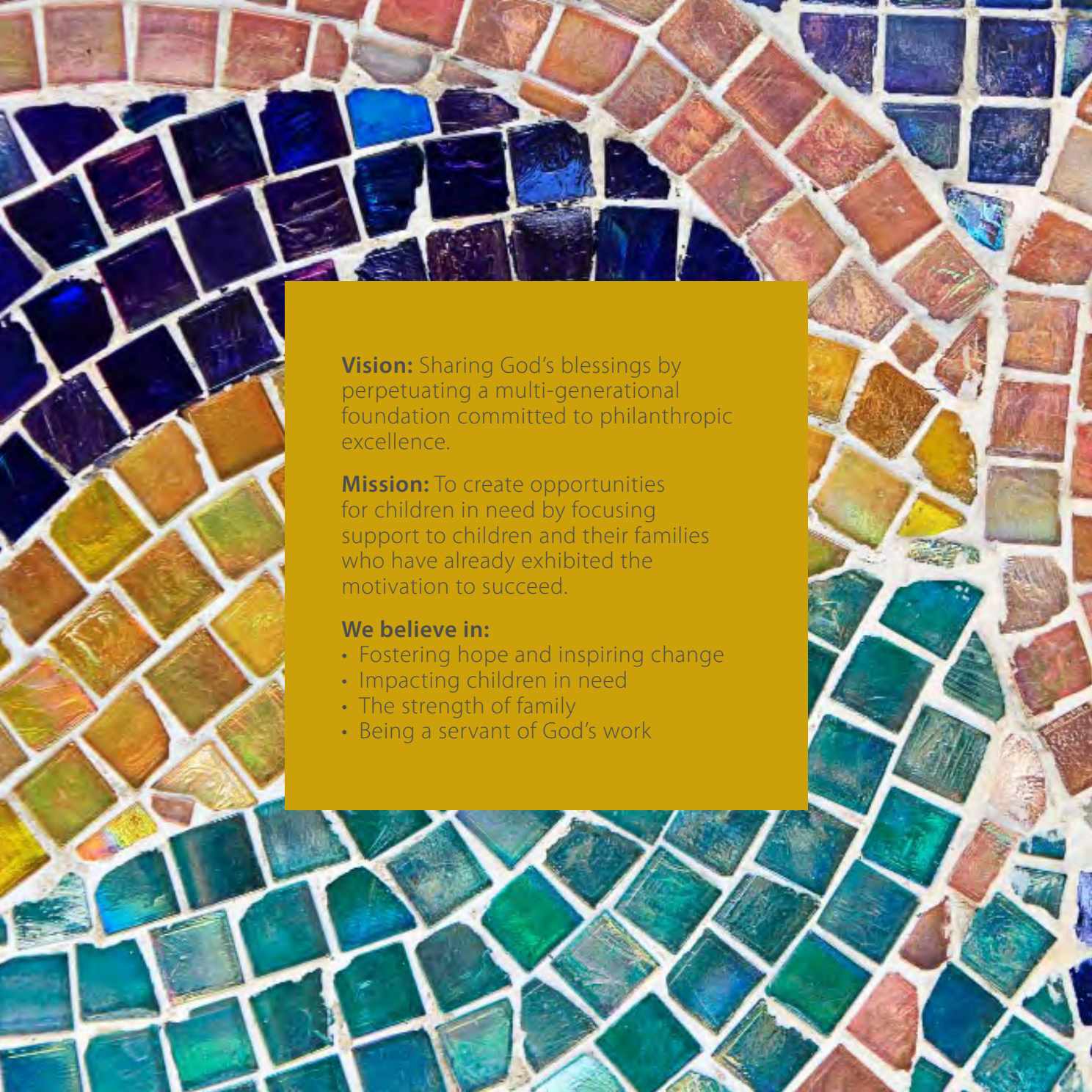
Our family is honored to help fund the tremendous efforts of organizations in our community that prioritize the needs of local children and their families. We hope that you are inspired by what you read in the pages of our 2010 Annual Report and that you will join us in supporting new opportunities for a brighter future.

We are all pieces in a greater mosaic. Just as light shining through reflects the warmth of the sun, we hope that our collective efforts will reflect the warmth of God’s love.

In His service,

**MaryAnn Mathile**

**Clayton L. Mathile**



**Vision:** Sharing God's blessings by perpetuating a multi-generational foundation committed to philanthropic excellence.

**Mission:** To create opportunities for children in need by focusing support to children and their families who have already exhibited the motivation to succeed.

**We believe in:**

- Fostering hope and inspiring change
- Impacting children in need
- The strength of family
- Being a servant of God's work

## From the Executive Director

In over two decades, the Mathile Family Foundation has seen great change – here within our walls and within the organizations we support. However, one thing remains the same: the Mathile Family's vision to share its good fortune through philanthropic excellence.

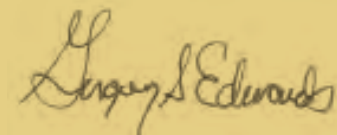
We believe that the number-one challenge is access to high-quality and affordable educational opportunities. Further, we believe that the greatest social and economic equalizer is education, which is why the Mathile Family invests more time, energy, and resources each year toward finding systematic solutions for children and families in need.

Through the generosity of the Mathile Family and the Foundation's focus on education, we will continue to help our grantee organizations strengthen families. We hope that the children of those families will invest their own resources and talents someday to build a stronger Dayton region and to create a better world.

This is the work that most inspires us – the quest for every child in our community to have access to high-quality and affordable educational opportunities. However, implementation of our vision could not be possible without the nonprofit organizations who work tirelessly to create a "mosaic" of our shared hopes and dreams.

Sincerely,

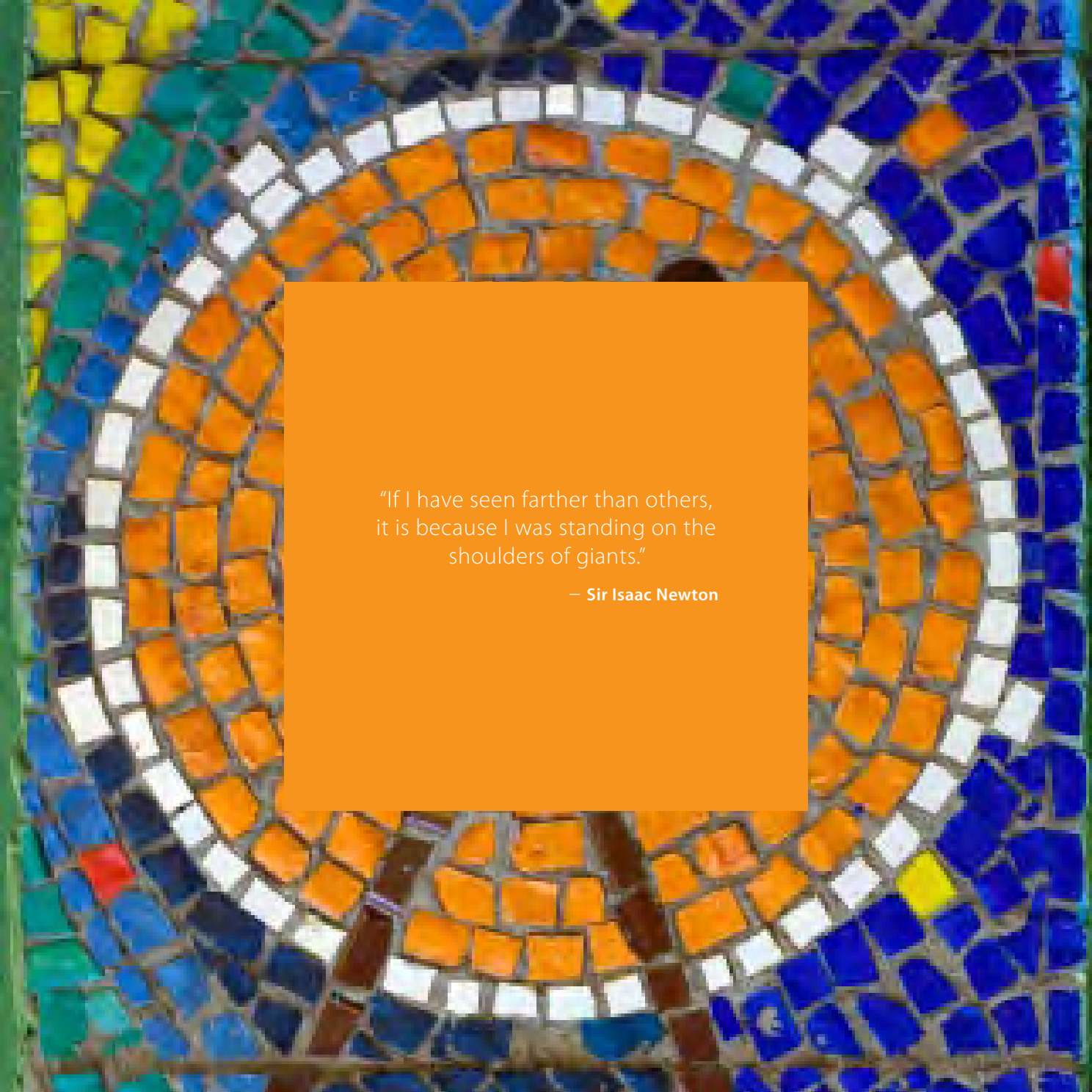
**Gregory S. Edwards**





**Table of Contents:**

- 8 Education Initiative
- 14 Responsive Grantmaking
- 22 1Q Grants
- 23 2Q Grants
- 24 3Q Grants
- 25 4Q Grants
- 26 Application Guidelines
- 29 Trustees and Staff
- 30 Financial Statement



"If I have seen farther than others,  
it is because I was standing on the  
shoulders of giants."

– Sir Isaac Newton



**Creating a Brighter Future:**  
*Strategic Initiatives in Education*



Many of Dayton's young students living in underserved neighborhoods are motivated to learn and succeed. However, a growing number lack access to educational opportunities that will help them to fulfill their potential. Without access, breaking a disappointing cycle of poverty becomes more difficult. At the Mathile Family Foundation, we believe that the greatest social and economic equalizer is education. So, the support of quality educational opportunities for our area's at-risk children has grown even more important in more than 20 years of service. As disparity grows among our classes, our commitment increases to close the gap.

With this in mind, the Mathile Family Foundation has established a goal to increase the number of low-income post-secondary graduates from our most-vulnerable neighborhoods. Naturally, providing tuition assistance and scholarships to increase college access and success is an integral part of our strategic equation.

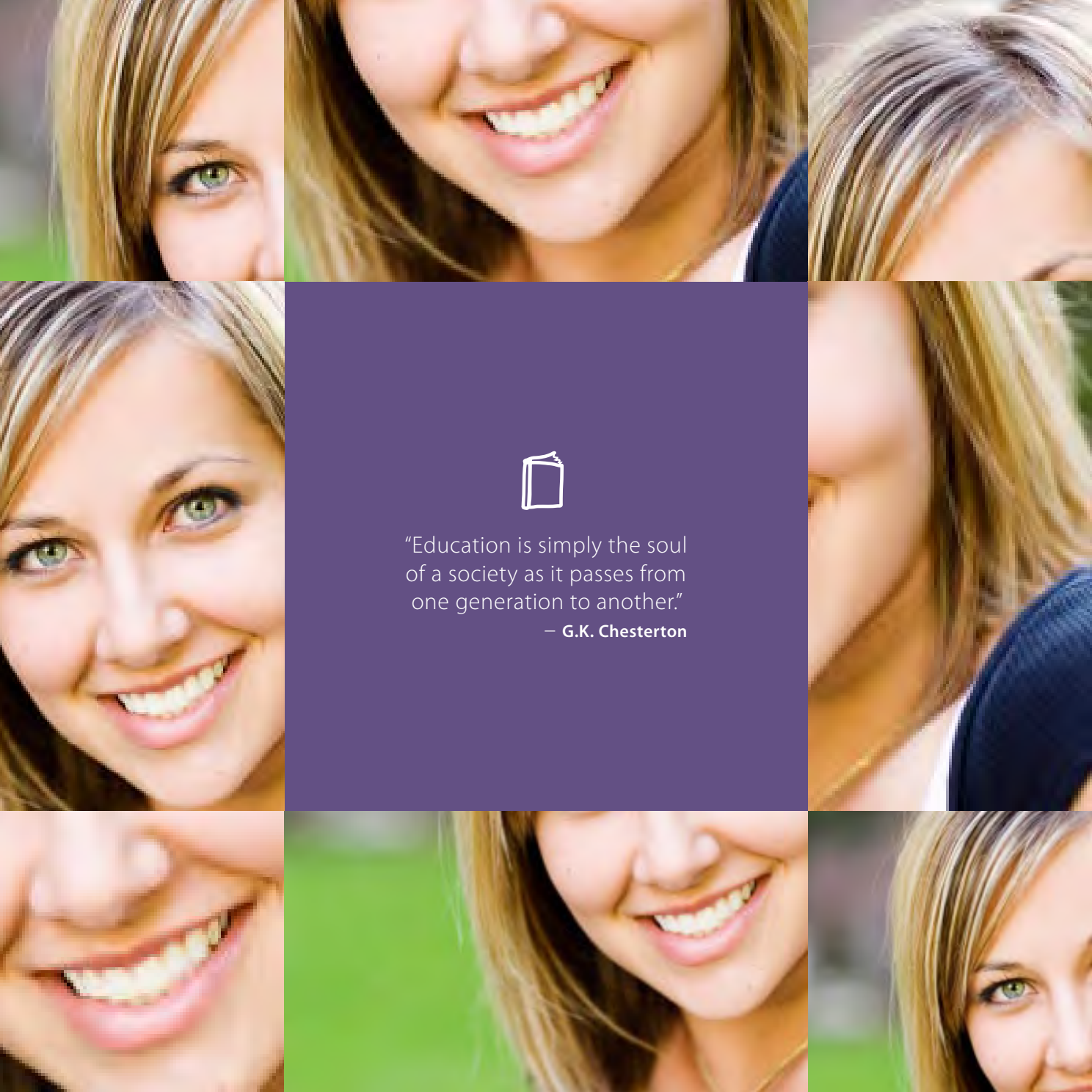
Foundation support of Catholic schools completes the strategy and plays a particularly valuable role in this effort. Alongside high academic expectations, Catholic schools uphold the moral and community values that have proven

to prepare our youth to be productive citizens. However, in recent years, they have struggled with funding and sustainability, especially with the growing needs of high-poverty students.

To preserve these institutions that inspire the greatest change among the least of us, we must act. The Foundation intends to set in place strategic initiatives designed to create, revitalize, or further strengthen five key areas, including academic excellence; leadership and professional development; faith formation; finance and governance; and student support. With initiatives in place, we hope to ensure that students are academically prepared and successful.

*"The greatest social and economic equalizer is education."*

**– The Mathile Family**



“Education is simply the soul of a society as it passes from one generation to another.”

— G.K. Chesterton

**Polishing the Pieces:**  
*Making Great Institutions Even Better*

One of the key areas that is seen as being essential to the creation of strong, stable, and successful schools is the investment in student support. Students from high-poverty homes often come to school hungry or in poor health, with serious social-emotional needs or family discord – all barriers that prevent them from moving forward. By initiating comprehensive student-support efforts, we hope to invest in the academic success and healthy development of these young learners.

The Mathile Family Foundation has partnered with Boston College to implement their acclaimed model of student support, City Connects. Designed as a more-coordinated and comprehensive system for addressing the nonacademic needs of students, City Connects works to connect every student with a tailored set of prevention, intervention, and enrichment services he or she needs to thrive.

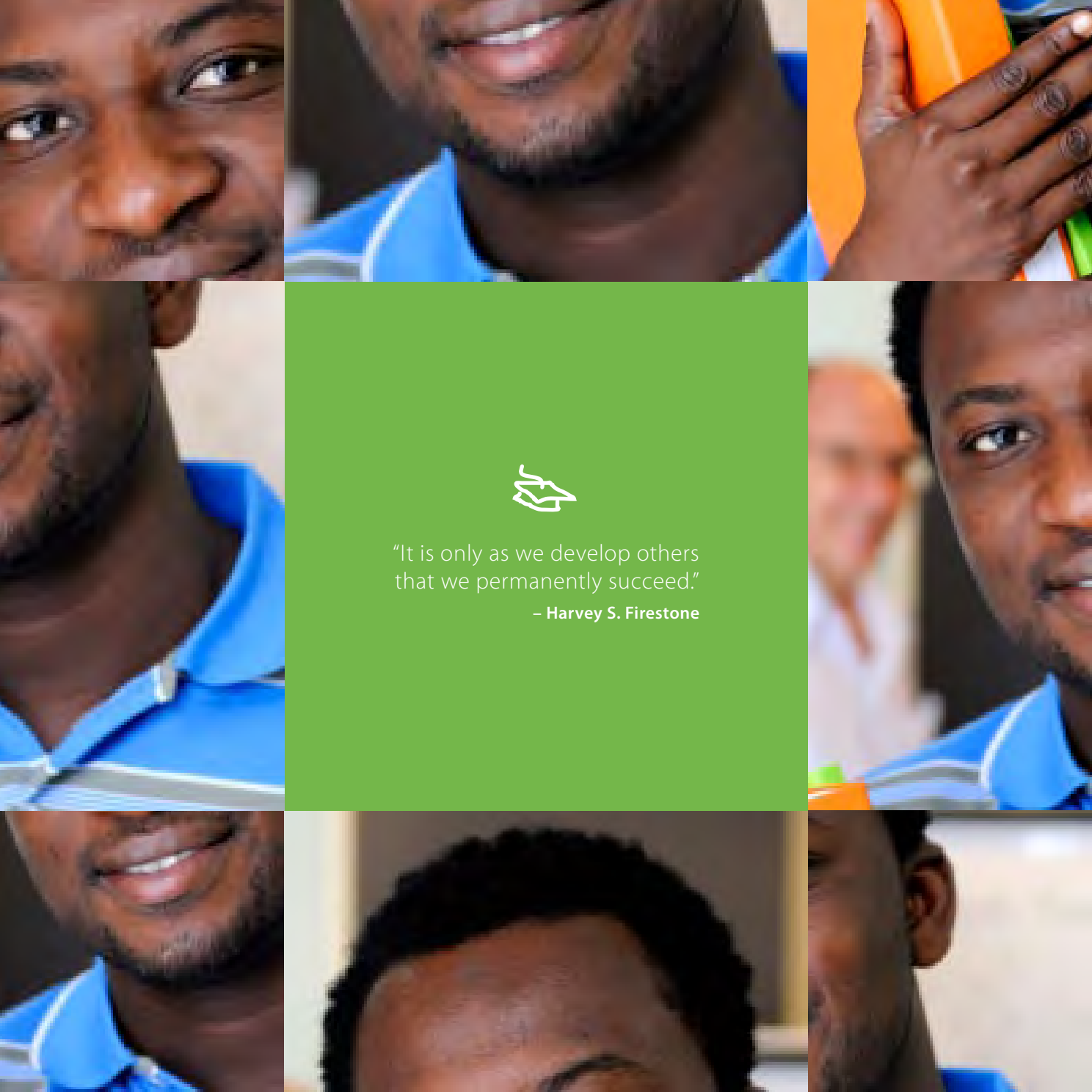
In 2010, the Foundation completed its third year of implementing the City Connects model in Our Lady of the Rosary School. Our partnership with Boston College expanded even further through a commitment to design and develop a secondary model for City Connects at Chaminade-Julienne High School. This beneficial collaboration will help Dayton to become the first K-12 student-support system in the country utilizing the City Connects model.

The Foundation also invests in quality student-support programs designed and developed right here at home. The Urban Child Development Resource Center (UCDRC), a partnership between the University of Dayton’s Center for Catholic Education and local Catholic schools, strives to establish and support a

healthful learning environment by working with students and families to remove stress that adversely impacts a child’s ability to focus in the classroom. UCDRC utilizes licensed clinical counselors to deliver an array of counseling and support services including individual, group, and family counseling; mental health education; and behavioral health consultation, referral, and follow-up. UCDRC serves over 1,300 students in six Dayton-area Catholic schools, with the goal of ensuring that every child comes to school ready to learn.

**Student-Support Initiatives**





"It is only as we develop others that we permanently succeed."

– Harvey S. Firestone

**The Opportunity To Shine:**  
*Making a Way for Motivated Students*

By investing in scholarship and tuition assistance for students throughout the Dayton community, the Mathile Family Foundation makes an investment both *of* and *in* faith. We believe that our youth can succeed.

Throughout 2010, the Mathile Family Foundation provided over \$1 million in tuition assistance and over \$500,000 to support K-12 scholarships to area students seeking opportunities here in Dayton, including access to six Catholic schools and one local charter school. Additionally, \$934,000 in scholarship funds were awarded in support of post-secondary education.

Scholarship and tuition assistance, through programs such as PACE (Parents Advancing Choice in Education), raise the bar of expectation for our entire community. Likewise, they instill confidence in students and parents who can depend on them for the power of choice, and for informational and social support that builds strength into healthy family relationships and fosters student achievement.

**Increasing College Access & Success**





The Community Mosaic:  
*Responsive Grantmaking*



Healthy children make for strong families. And strong families are the foundation of successful communities.

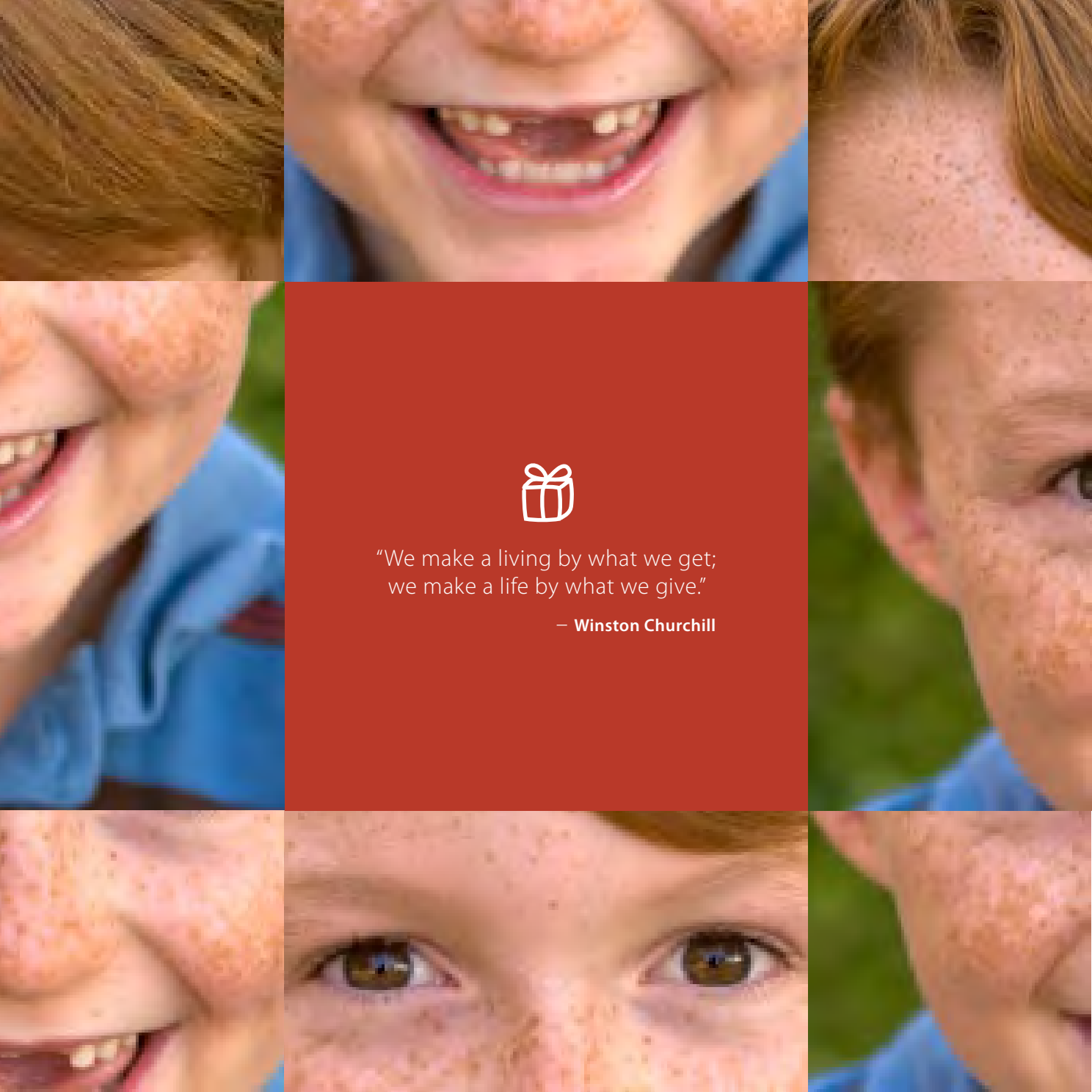
Even as our own community continues to struggle with challenging economic times, our resolve is steadfast. Greater Dayton is home to the Mathile Family, and our Foundation's commitment to serving those in need is firmly grounded. So, as needs arise, we will rise to meet them.

The Mathile Family Foundation continues to support results-driven nonprofits that prove to have the greatest impact on the Dayton area's most-vulnerable children and their families. Grants to these organizations provide healthy support for educational, social-emotional, and physical development where opportunities are limited or unavailable.

"All that is valuable in human society depends upon the opportunity for development accorded the individual."

- Albert Einstein





"We make a living by what we get;  
we make a life by what we give."

– Winston Churchill

### Filling In the Missing Pieces: *Bridging the Gap in Dental Care*

According to a recently published report from the University of Washington School of Medicine in Seattle, poor, minority and special-needs children in the United States are more likely than other children to be stricken with the pain of a toothache.

Dental health, especially preventative care, is closely linked to overall health and can be crucial in avoiding the development of more-acute problems. Whether it be financial or otherwise, a lack of access is frequently the biggest culprit in inadequate dental care. That leaves many young faces with a frown.

Founded over 15 years ago as a faith-based human-development organization, the Good Neighbor House has long reached out to the Miami Valley's underserved to offer basic clothing and food pantry services. But as needs in the Dayton community have grown, so has their provisional vision.

In 1996, through community partnerships, the Good Neighbor House established a clinic dedicated to providing free medical services to working, but underinsured families. In addition to vision, health education, and screenings, the clinic also offers imperative dental services as part of a holistic approach to serving vulnerable children.

A Mathile Family Foundation grant supports smiles with financial assistance for the dental clinic at Good Neighbor House, one of the only remaining safety-net dental clinics in the Dayton area. Happy, healthy children and their families provide a foundation for strength in community, education and uplifted lives.

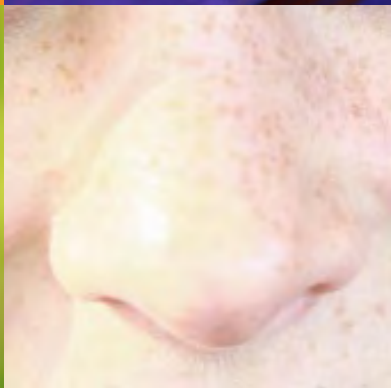
### Good Neighbor House



*Archives of Pediatrics & Adolescent Medicine, November 2010.*



  
 "Love begins at home, and it is not how much we do, but how much love we put into that action."  
 – Mother Teresa



**Creating a Framework:**  
*Building Strong Families*

When asked about the goal of the Dayton Ohio Habitat for Humanity (DOHH), the average citizen would respond quickly: to build affordable homes for our neighbors in need. And rightly so. Making decent shelter a matter of conscience and action is at the core of the DOHH mission. In fact, in their 25 years, they have helped nearly 160 families become homeowners.

The average citizen may be unaware of the educational and support programs that DOHH puts into place to prepare families for owning a home and, even more important, to keep them there.

Long-term, successful home ownership is the goal of DOHH – and they have long known that there is more to creating homes than hammers and nails. DOHH serves the partner families of Montgomery County with educational and support services that help to ensure their success as mortgage-paying citizens. Up-front subsidy, education, and training lay a foundation for the initial stages of home building for partner families. Homeowners benefit from ongoing, follow-up DOHH support, including classes on budget and mortgage management, among others. To date, DOHH is one of the few programs in Montgomery County providing these services, thereby making a direct impact on the poverty and homelessness that is a reality for too many Dayton families.

At the Mathile Family Foundation, we recognize the home as a safe shelter and solid foundation for all families – the place where health, citizenship, education, and achievement begin. With a Foundation grant, DOHH continues to build safe and affordable homes throughout Montgomery County, as well as strong families and great hope that reverberate far beyond its borders.

**Dayton OH Habitat for Humanity**





“All loves should be simply stepping stones to the love of God.”

– Plato

### **Making Room in the Mosaic:** *Meeting the Challenge to Fit In*

Children with disabilities are often unable to participate in traditional childhood activities like team sports and climbing on the playground. Sadly, some physical and mental disabilities are so severe, they prevent children from even taking part in aspects of everyday life, like socializing with friends. Young minds often can be left wondering, “Where do I fit in?” With no sense of belonging there is no sense of self-purpose and no hope.

The Stepping Stones Center for the Handicapped (SSC) rises to meet the challenge of providing that hope. Founded in 1963, this Cincinnati-based United Way Partner agency serves nearly 1,000 people with disabilities annually. Their focus has been to increase independence, promote inclusion and, ultimately, improve lives.

The SSC can provide 24-hour, one-on-one care in a safe and loving environment. As a direct result, children – even those with the most-severe disabilities who often have never been away from caregivers – get the chance to interact independently and just be a “regular kid.” At the same time, parents/caregivers are often afforded the opportunity to reenergize and focus on themselves or on other children.

The Mathile Family Foundation recognizes Stepping Stones for taking an active role in tending to the social-emotional needs of children with disabilities in our community and for making a direct impact on the strength of their family support. While the facility is located in Cincinnati, a grant from the Foundation supports scholarships for week-long summer camp experiences and “respite weekends” for children with disabilities who reside in Montgomery County.

### **Stepping Stones Center**



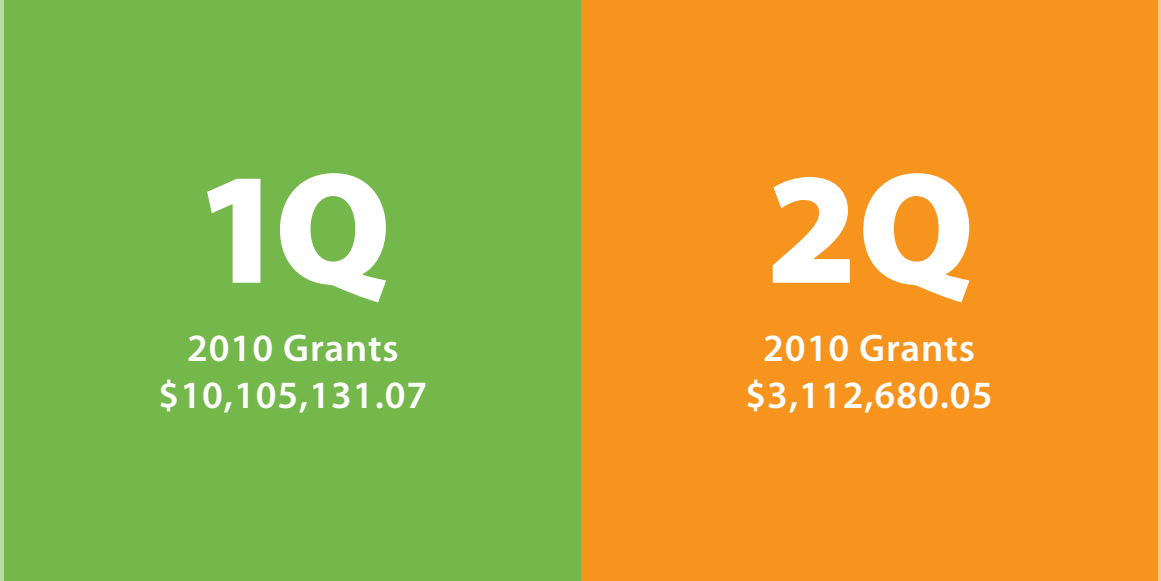
- 4 Paws For Ability, Inc.
- A Kid Again
- A Special Wish Foundation
- Adorers of the Blood of Christ
- Aileron
- Alzheimer's Disease and Related Disorders Association, Inc.
- American Cancer Society, Inc.
- American Diabetes Association, Inc.
- American Heart Association, Inc.
- American Lung Association of Ohio
- Artemis Center
- Big Brothers Big Sisters of the Greater Miami Valley, Inc.
- Black Alliance for Educational Options
- Black Brothers/Black Sisters Involvement
- Bowling Green State University
- Boys Hope Girls Hope
- Building Bridges, Inc.
- Camp Fire USA Greater Dayton Area Council
- Catholic Inner-City Schools Education Fund
- Chaminade Julianne Catholic High School
- Christ Child Society of Dayton, Inc.
- Clothes That Work!
- Cooperative for Education
- Crayons to Classrooms
- Cystic Fibrosis Foundation – Dayton Chapter
- The Dayton Art Institute
- Dayton Christian Center, Inc.
- Dayton Contemporary Dance Guild Incorporated
- The Dayton Foundation
- Dayton Fund for Home Rehabilitation
- Dayton Sickle Cell Affected Families Association, Inc.
- Dayton Urban League
- DePaul University
- Development Research Corporation

- Epilepsy Foundation of Western Ohio
- Family and Youth Initiatives
- The Foodbank, Inc.
- The Glen at St. Joseph
- Golden Acres Migrant Ministrant Center
- Goodwill/Easter Seals of the Miami Valley
- Greater Dayton Area Health Information Network
- Greater Dayton Pro-Life Education Foundation
- Huesman Heart Foundation, Inc.
- Humane Society of Greater Dayton
- Indiana Wesleyan University
- The Learning Tree Farm, Inc.
- Life Essentials, Inc.
- March of Dimes Foundation
- Martin Bayless Foundation
- Memorial United Church of Christ
- The Muse Machine, Inc.
- The National Conference for Community and Justice of Greater Dayton
- National Multiple Sclerosis Society
- Ohio Business Week Foundation
- Ohio FFA Foundation, Inc.
- The Ohio Foundation of Independent Colleges, Inc.
- Ohio Northern University
- Parents Advancing Choice in Education, Inc.
- Reach Out of Montgomery County
- Rehabilitation Center for Neurological Development
- Ronald McDonald House Charities of the Miami Valley Region, Inc.
- St. Benedict the Moor Catholic Church
- St. Christopher Church
- St. Jude Children's Research Hospital
- Saint Mary's College
- St. Rita School for the Deaf
- The Ohio State University
- The Salvation Army

- Samaritan Outreach
- Sinclair Community College
- Sinclair Community College Foundation
- Special Olympics of Greater Dayton
- Stepping Stones Center for the Handicapped
- Suicide Prevention Center, Inc.
- University of Cincinnati
- University of Dayton
- Valparaiso University

- Anderson University
- Archdiocese of Cincinnati
- Boys Hope Girls Hope
- Camp Fire USA Greater Dayton Area Council
- Catholic Relief Services, Inc.
- Dayton Boys and Girls Club
- DePaul University
- Family Service Association

- Miami Valley Women's Center
- Ohio Northern University
- Ronald McDonald House Charities of Greater Cincinnati
- St. Benedict the Moor Catholic Church
- St. Christopher Church
- Saint Mary's College
- South Community, Inc.
- The Ohio State University
- University of Cincinnati
- University of Dayton
- Ursuline Academy of Cincinnati
- Wright Dunbar, Inc.
- Zoological Society of Cincinnati



- Victoria Theatre Association
- We Care Arts
- West Virginia University
- Womanline of Dayton, Inc.
- YWCA of Dayton

- Family Violence Prevention Center of Greene County, Inc.
- The Glen at St. Joseph
- Glen Helen Association, Inc.
- Good Neighbor House
- Holy Angels School
- Kettering Parks Foundation
- Marianist Province of the U.S.
- Memorial United Church of Christ
- Miami Valley Career Technology Center

“Charity may be a very short word, but with its tremendous meaning of pure love, it sums up man’s entire relation to God and to his neighbor.”

– St. Aelred of Rievaulx

- ACE Foundation (Anthony Muñoz Foundation)
- Anderson University
- Archdiocese of Cincinnati
- Carroll High School
- Catholic Relief Services, Inc.
- Chaminade Julianne Catholic High School
- Children’s Hospital Medical Center
- Congregation of Divine Providence
- Daybreak, Inc.
- Dayton Boys and Girls Club
- Dayton Contemporary Dance Guild Incorporated
- Dayton Public Schools
- Dayton Society of Natural History
- DePaul University
- Eastway Corporation
- Girl Scouts of Western Ohio – Buckeye Trails Region
- The Glen at St. Joseph
- Golden Acres Migrant Ministrant Center
- High Rise Services Company, Inc.
- Holt Street Miracle Center, Inc.
- Hospice of Dayton, Inc.
- Indiana Wesleyan University
- International Samaritan
- James M. Cox, Jr. Arboretum Foundation
- K12 Gallery for Young People
- Kettering Parks Foundation
- The Learning Tree Farm, Inc.
- Marianist Province of the U.S.
- Memorial United Church of Christ
- Miami University
- The National Conference for Community and Justice of Greater Dayton
- Northwest State Community College Foundation
- Our Lady of the Rosary School
- Parents Advancing Choice in Education, Inc.
- Precious Blood Church
- St. Benedict the Moor Catholic Church
- St. John’s Jesuit High School
- Saint Mary’s College
- The Society for the Propagation of the Faith
- Society of St. Vincent de Paul
- South Community, Inc.
- The Ohio State University
- The Summit Country Day School
- Think Tank, Inc.
- Thomas More College
- University of Cincinnati
- University of Dayton
- Wright State University Foundation

**3Q**  
**2010 Grants**  
**\$4,205,859.17**

**4Q**  
**2010 Grants**  
**\$2,663,097.35**

- American National Red Cross – Dayton Chapter
- Archbishop Alter High School
- Black Brothers/Black Sisters Involvement
- Bowling Green State University
- Catholic Inner-City Schools Education Fund
- Catholic Social Services of the Miami Valley
- Child Care Choices, Inc.
- East End Community Service Corp.
- Elizabeth’s New Life Center
- Family Violence Prevention Center of Greene County, Inc.
- The Glen at St. Joseph
- Good Neighbor House
- High Rise Services Company, Inc.
- Junior Achievement OKI Partners, Inc.
- McAuley High School
- Memorial United Church of Christ
- Northwest State Community College Foundation
- Ohio Association of Nonprofit Organizations
- Ohio Grantmakers Forum
- Ohio Northern University
- Ohio University
- Our Lady of the Rosary School
- Saint Mary’s College
- St. Peter Church
- The Ohio State University
- The Society for the Propagation of the Faith
- Society of St. Vincent de Paul
- United Way of Greater Dayton
- University of Cincinnati, Inc.
- Wesley Community Center, Inc.

- The Children’s Medical Center
- Cincinnati Museum Association
- CityWide Neighborhood Development Corporation
- Dayton Early College Academy, Inc.
- Dayton Ohio Habitat for Humanity, Inc.
- Dayton Philharmonic Orchestra Association
- Dayton Urban League



## Quarterly Grant Application Guidelines

### SUBMISSION METHODS

Out of respect for our environment, the Mathile Family Foundation requires grantseekers to submit funding proposals online via our Web site at: [mathilefamilyfoundation.org/giving/grants.asp](http://mathilefamilyfoundation.org/giving/grants.asp). We will accept hard-copy proposals only under special circumstances. Supporting documentation may still be submitted in hard copy by mail.

### MISSION

To create opportunities for children in need by focusing support to children and their families who have already exhibited the motivation to succeed.

### GEOGRAPHIC PRIORITY

The Mathile Family Foundation gives highest priority to eligible organizations located in the Greater Dayton area. Organizations that fall outside this geographic scope are considered only under special circumstances.

### GRANT AWARDS

The Foundation considers proposals for grant amounts of \$1,000 and higher. Multiyear funding requests may be considered for up to three years. The size of the request should be 10 percent of the project's budget.

### ELIGIBILITY

Organizations requesting funds must be tax-exempt under the Internal Revenue Code Section 501(c)(3). The Foundation supports projects that best align with its mission. In addition to project support, the Foundation also considers funding requests for capital and operating expenses.

### GRANT LIMITATIONS

The Mathile Family Foundation will not consider funding requests for the following:

- Endowment funds
- Mass funding appeals
- Sponsorships, except for special circumstances
- Tickets or advertising for fundraising events
- Grants or loans to individuals
- Political campaigns or activities

### GRANT PROPOSAL FORMAT

In an effort to conserve resources, the Mathile Family Foundation requires:

1. **Grantseekers to submit proposals online.**
2. **Proposals to be a maximum of four pages.**
3. **Proposal content to include:**

#### A. Organizational Information, including

- Vision and mission statements
- History and purpose
- Brief description of services provided and service area

#### B. Project Description, including Statement of why the project is needed and the specific problems it will help to address in the community; please provide relevant statistical data, preferably local, that supports your needs statement.

- Description of the project for which funding is requested
- Profile of the population served and how they will benefit
- Description of project goals with specific measurable outcomes and indicators of success. (The Foundation will place greater priority on projects that present clear and measurable outcomes.)

- Timeline of activities to meet project objectives
- Total dollar amount requested, along with a line-item project budget
- List of collaborating partners in the project and their roles
- List of amounts pending and committed by other funders to the project
- Explanation of how the project will be sustained beyond the period for which funding is requested

#### C. Project Evaluation

The Foundation will place greater priority on projects that present clear and measurable outcomes, including:

- Description of how you plan to measure whether the project met its goals and outcomes; your plan should specify any tools and/or methods used for measuring progress and success
- Description of how the organization defines the success of the project
- Explanation of how the results of your project evaluation will be used

#### 4. Please include with your proposal one copy of the following supporting documentation:

- One-page cover letter, signed by the chief executive officer, that summarizes the project and states the requested amount
- Board of Trustees list
- Copy of IRS determination letter verifying tax-exempt status
- List of major financial contributors
- Most-recent audited financial statements
- Organizational budget for current year
- Organizational budget vs. actual for preceding year

- Current financial statements, including balance sheet and income statement
- Most-recent annual report
- Strategic plan

### PROPOSAL DEADLINES

The Mathile Family Foundation notifies prospective grantees of the funding decision within 70 days of the proposal deadline.

### THE DEADLINES FOR SUBMITTING A REQUEST ARE:

- **February 1**
- **May 1**
- **August 1**
- **November 1**

### LETTERS OF INQUIRY

The Mathile Family Foundation recommends that organizations who have never received funding should submit a brief letter of inquiry that provides organizational background and pertinent program information prior to submitting a full grant application. Although the Foundation does not prevent any organization from submitting a full proposal, a letter of inquiry may save your organization time and resources because our program staff may be able to indicate that a program is outside the mission and funding priorities of the Mathile Family Foundation. Letters of Inquiry can be submitted by e-mail to: [grants@mathilefamilyfoundation.org](mailto:grants@mathilefamilyfoundation.org).



“Leadership is not about titles, positions or flowcharts. It is about one life influencing another.”

– John C. Maxwell

### 2010 Board Members

MaryAnn Mathile	<i>Chair, Chief Executive Officer and Treasurer</i>
Clayton L. Mathile	<i>President</i>
Richard J. Chernesky	<i>Secretary</i>
Catherine Mathile Laden	
Timothy Mathile	
Michelle Mathile	
Francis J. Butler	
John C. Vatterott	
Mary E. Walsh	

### 2010 Executive and Administrative Staff

Gregory S. Edwards	<i>Executive Director</i> . . . . . (937) 264-4632
Donna Beeson	<i>Executive Assistant to the Chair and CEO</i> . . . . . (937) 264-4610
Brenda Carnal	<i>Executive Assistant to the Executive Director</i> . . . . . (937) 264-4606

### 2010 Program Staff

Bonnie Baker	<i>Director of Community Relations</i> . . . . . (937) 264-4806
Nina DiGuardi Vasiliu	<i>Program Officer</i> . . . . . (937) 264-4801
Angela Hayes	<i>Grant Associate</i> . . . . . (937) 264-4607
Brooke L. Katinsky	<i>Program Officer</i> . . . . . (937) 264-4807
Kippy Ungerleider King	<i>Program Director</i> . . . . . (937) 264-4609
Mary Lynn Naughton	<i>Program Director</i> . . . . . (937) 264-4802

## Financial Statement

### STATEMENTS OF FINANCIAL POSITION as of November 30, 2010 and 2009

ASSETS	2010	2009
Cash	\$117,659	\$85,020
Investments	290,395,819	281,840,479
Current excise tax credit	576,092	591,340
Other assets	8,739	23,662
<b>Total assets</b>	<b>\$291,098,309</b>	<b>\$282,540,501</b>
<b>LIABILITIES AND NET ASSETS</b>		
Accrued expenses	\$32,969	\$20,631
Accrued liabilities to related party	14,855,735	12,189,122
Deferred excise tax liability	501,557	501,557
Total liabilities	15,390,261	12,711,310
Unrestricted net assets	275,708,048	269,829,191
<b>Total liabilities and unrestricted net assets</b>	<b>\$291,098,309</b>	<b>\$282,540,501</b>

### STATEMENTS OF ACTIVITIES AND CHANGES IN NET ASSETS

for the Years Ended November 30, 2010 and 2009

CONTRIBUTIONS AND INVESTMENT INCOME	2010	2009
Contributions	\$5,027,500	\$119,500
Investment income	25,555,339	33,922,483
<b>Total contributions and investment income</b>	<b>30,582,839</b>	<b>34,041,983</b>
<b>EXPENSES</b>		
Grants	20,086,768	17,468,361
Investment and advisory fees	2,698,045	2,619,784
Operating expenses	1,919,169	2,062,433
Excise tax (benefit) expense	–	517,579
<b>Total expenses</b>	<b>24,703,982</b>	<b>22,668,157</b>
Change in net assets	5,878,857	11,373,826
Net assets, beginning of year	269,829,191	258,455,365
<b>Net assets, end of year</b>	<b>\$275,708,048</b>	<b>\$269,829,191</b>

### STATEMENTS OF CASH FLOWS as of November 30, 2010 and 2009

OPERATING ACTIVITIES	2010	2009
Change in net assets	\$5,878,857	\$11,373,826
<b>ADJUSTMENTS TO RECONCILE CHANGE IN NET ASSETS TO NET CASH USED IN OPERATING ACTIVITIES:</b>		
Unrealized gains on investments, net	(16,664,330)	(33,814,445)
Current excise tax credit	–	(2,632)
Other assets	14,923	(4,111)
Accrued liabilities	12,338	(521,665)
Accrued liabilities due to related party	2,666,612	2,653,611
Deferred excise tax liability	–	501,557
<b>Net cash used in operating activities</b>	<b>(8,091,600)</b>	<b>(19,813,859)</b>
<b>INVESTING ACTIVITIES</b>	<b>2010</b>	<b>2009</b>
Purchases of investments	(42,534,869)	(88,075,006)
Proceeds from sales of investments	50,659,108	107,973,885
<b>Net cash provided by investing activities</b>	<b>8,124,239</b>	<b>19,898,879</b>
<b>INCREASE IN CASH AND CASH EQUIVALENTS</b>	<b>32,639</b>	<b>85,020</b>
Cash and cash equivalents at beginning of year	85,020	–
Cash and cash equivalents at end of year	\$117,659	\$85,020
<b>SUPPLEMENTAL DISCLOSURES OF CASH FLOW INFORMATION</b>	<b>2010</b>	<b>2009</b>
Cash paid for excise taxes	\$0	\$487,307





“There is a light in this world, a healing spirit more powerful than any darkness we may encounter. We sometimes lose sight of this force. Then suddenly, the spirit will emerge through the lives of ordinary people who hear a call and answer in extraordinary ways.”

– **Mother Teresa**

To learn more about the efforts of the Mathile Family Foundation, please visit us at:  
[mathilefamilyfoundation.org](http://mathilefamilyfoundation.org).

**Mathile Family Foundation**

P. O. Box 13615

Dayton, Ohio 45413-0615

Phone: 937-264-4600

Fax: 937-264-4805